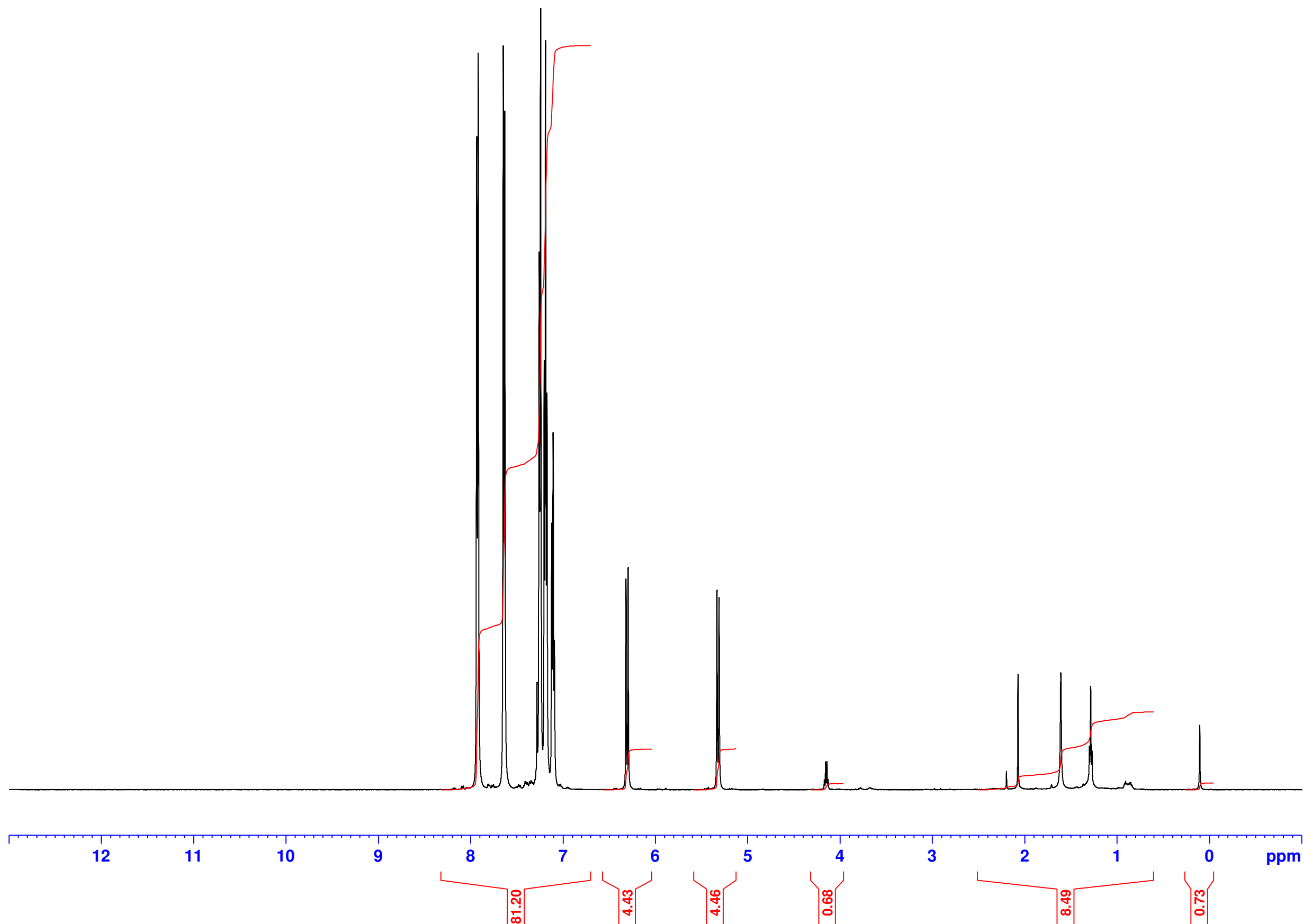




1H Observe
EM033 full characterisation



School of Chemistry
NMR Service



Current Data Parameters
NAME 03282017-6-cdt-em248-A
EXPNO 11
PROCNO 1

F2 - Acquisition Parameters
Date_ 20170328
Time 23.20
INSTRUM spect
PROBHD 5 mm CPPBBO BB
PULPROG zg30
TD 65536
SOLVENT CDCl3
NS 4
DS 2
SWH 7002.801 Hz
FIDRES 0.106854 Hz
AQ 4.6792703 sec
RG 32
DW 71.400 usec
DE 10.95 usec
TE 295.0 K
D1 1.00000000 sec
TD0 1

===== CHANNEL f1 =====
SF01 500.1330008 MHz
NUC1 1H
P1 12.50 usec
PLW1 14.00000000 W

F2 - Processing parameters
SI 65536
SF 500.1300000 MHz
WDW EM
SSB 0
LB 0.30 Hz
GB 0
PC 1.00